

The Getting Started Guide to

# Faculty Agency Solution

SimplyCast<sup>®</sup>

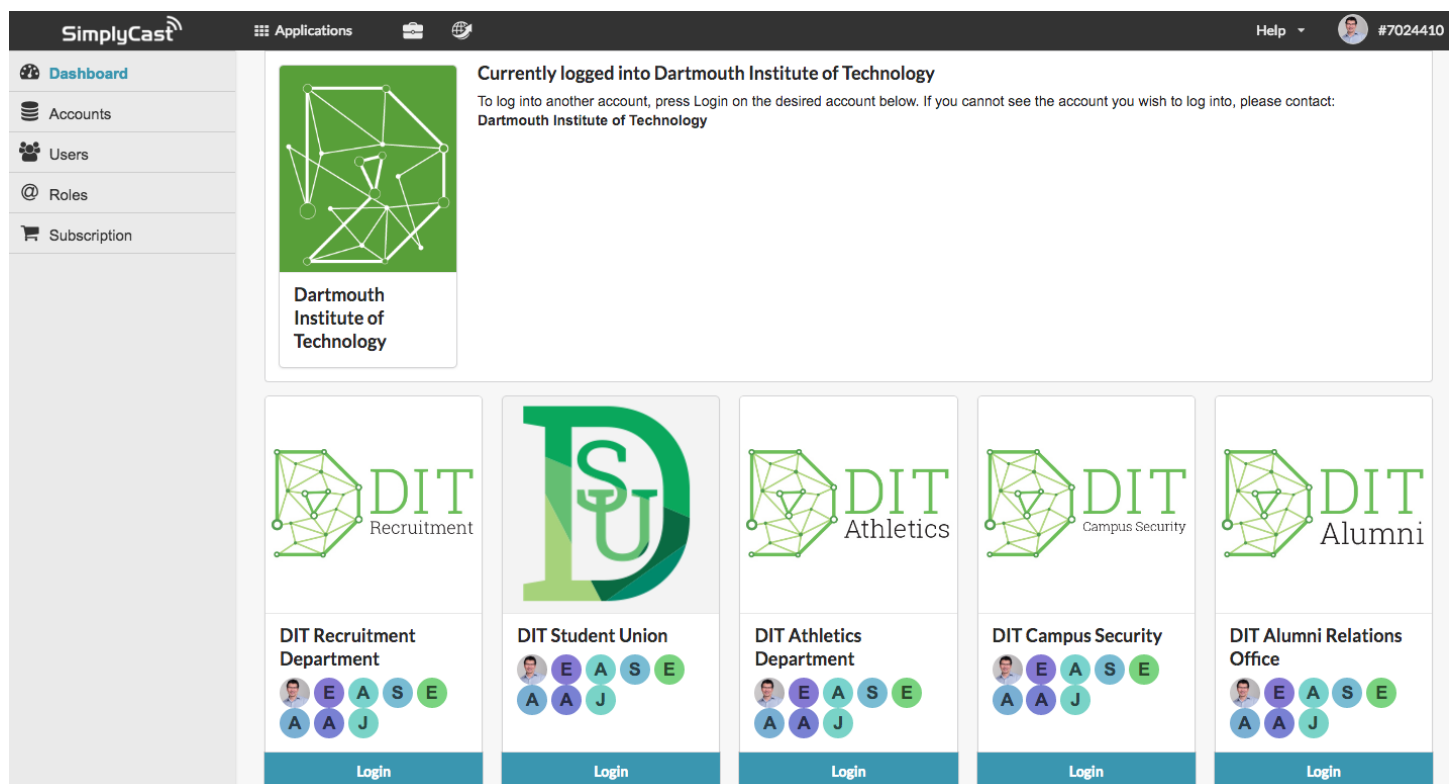
# Introducing SimplyCast Faculty Agency Solution

SimplyCast Faculty Agency Solution is a new model being unveiled by SimplyCast that will allow even more versatility for our customers. This model has been designed specifically for higher education faculties and departments based on real feedback and suggestions from industry leaders. Faculties often face a challenge when it comes to managing all their constituent data and organizing campaigns for each department.

We set out to make a tool that faculties could use to give each department manager access to versatile automation tools, while being able to set permissions for other staff members. From a single account, you access and manage all of your department accounts, manage employees and users, and create, edit, and analyze campaigns.

We built a model that is cost-effective and efficient for higher education institutions of all sizes. It can be used in a multitude of scenarios with relatively little computer knowledge necessary. We also have an API built in for departments who want to do their own customization.

Improve your departments' communication flow easier than ever before, and grow your own faculty as a result.



Screenshot of the Faculty Agency Dashboard for Department & User Management

# What Is The Faculty Agency Solution?

SimplyCast Faculty Agency Solution gives schools one powerful account that links to ten unique client department accounts, all with Enterprise level access to SimplyCast 360, our marketing automation platform. The solution comes with 10 user logins with unique permissions for employee and project management and 100,000 contacts that can be distributed among the 10 accounts.

## How Does That Benefit Me?

With ten accounts and 100,000 contacts, you are capable of catering to large and small departments and giving them the contacts they need with the services they want. The Faculty Agency account provides the flexibility to arrange the contacts among your departments based on how many contacts they require or pay for at a given time. That way, you never have to worry about contacts going to waste, or having a shortage. It's worth noting that these are starting values, and additional contacts can be purchased as necessary.

## What If Multiple People Are Managing Parts Of The Service?

With multi-user account permissions for individual employees, you have complete control over which employees can access which functions and campaigns. You can change the permissions to allow multiple staff members to work on one or more areas of a campaign for a department, and limit access for others. You can also allow a department to see how you have constructed their campaigns without allowing them to change anything.

## How Does It Work?

You have a single login portal for your agency through which you can log into your departmental accounts, and all your departmental data is separated in their

individual accounts. This way you have no risk of mixing up data, and everyone logs in from the same place. The portal is known as the Agency Dashboard.

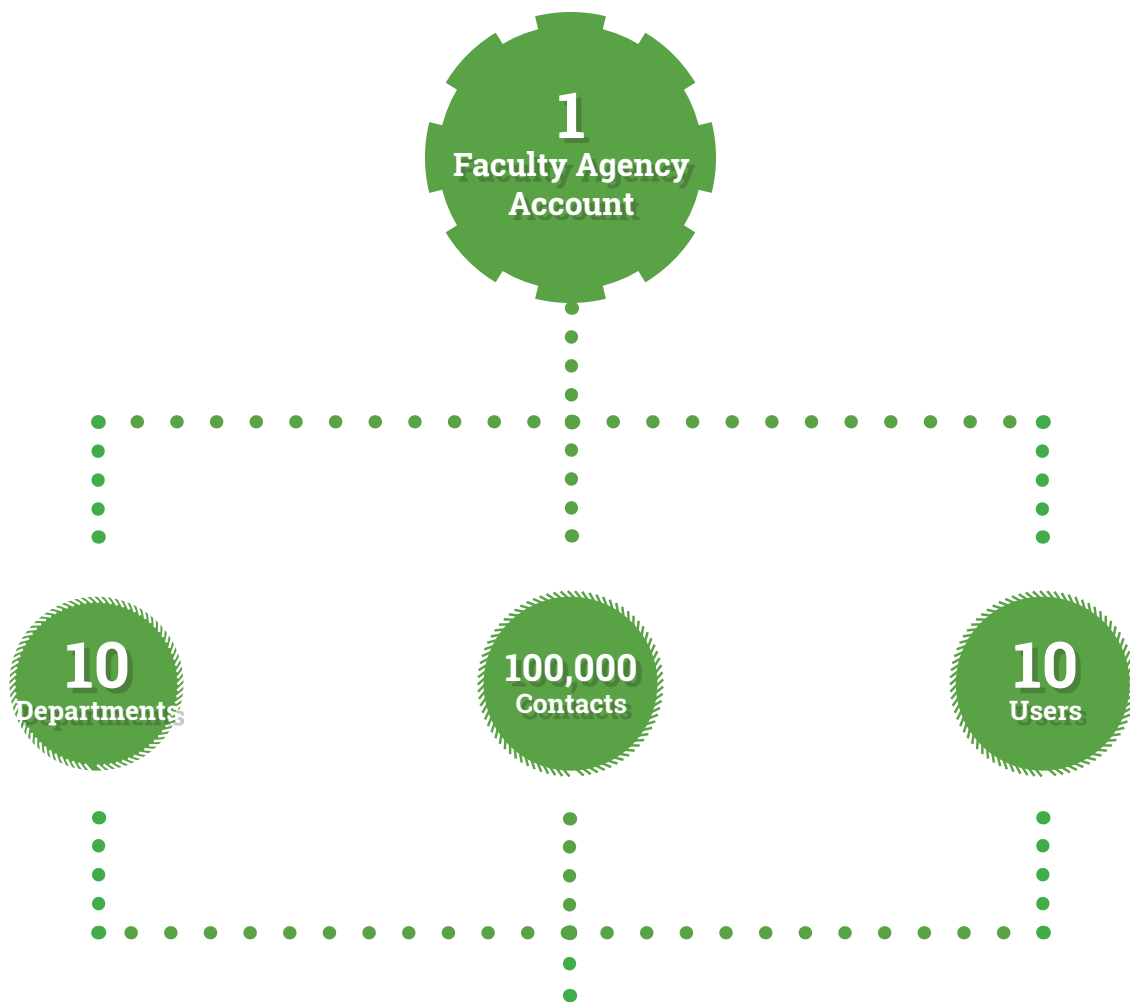
The Agency Dashboard has been custom-built specifically for faculties to enable you to manage all users and client accounts from one place. You can create and login to department accounts right from the Agency Dashboard, and even link department accounts that have already been created in the SimplyCast system. You can also manage all of your faculty's employees through the Faculty Agency Dashboard by setting them up with their own user accounts with unique roles and permissions. You can control which campaigns, designs, and content employees are able to view, edit, and send across different department accounts.

## This Sounds Good, But How Do I Manage Budgets?

We don't regulate how you operate beyond your use of the Faculty Agency Account and Dashboard, so you have the freedom to charge departments for the use of the software. In other words, you pay for your Faculty Agency account, and then you can charge your departments according to your own procedures.

## What Will It Cost Me?

Faculty Agency is just \$1000 per month. You get ten Enterprise level accounts, normally valued at approximately \$500 each per month, and the ability to charge your departments for the use of those accounts. You get an Faculty Agency level account for yourself, 10 user logins with unique permissions, and 100,000 contacts to distribute among your accounts. Best of all, you can add additional accounts at the Enterprise level for a fraction of the cost and additional contacts for those accounts with ease.



**\$1000 per month!**

### Add-Ons

Add additional department accounts for \$50 each monthly.

Add additional users for \$25 each monthly.

Add 250,000 additional contacts for \$1,000 monthly.



# Request A Demo

Sign up for a live demo with one of our experts. Our demos will show you how the platform works and how your company can use it to increase engagement and ROI.

---

## Questions?

If you have any questions about the Faculty Agency Solution, would like to set up an account, or want to schedule a one-on-one demo with one of our flow experts, send an email to our Education Solutions Team at [education@simplycast.com](mailto:education@simplycast.com) or call us at 1 (866) 323-6572, ext 1208 or 1218.